

BUKU HIJAU

Debian 6.0

Cara Install Linux Debian 6.0 Single
Boot

**Share Your Open Knowledge and
Skills With Linux on Open Source**

By: Safrizal

www.linuxanakaceh.wordpress.com

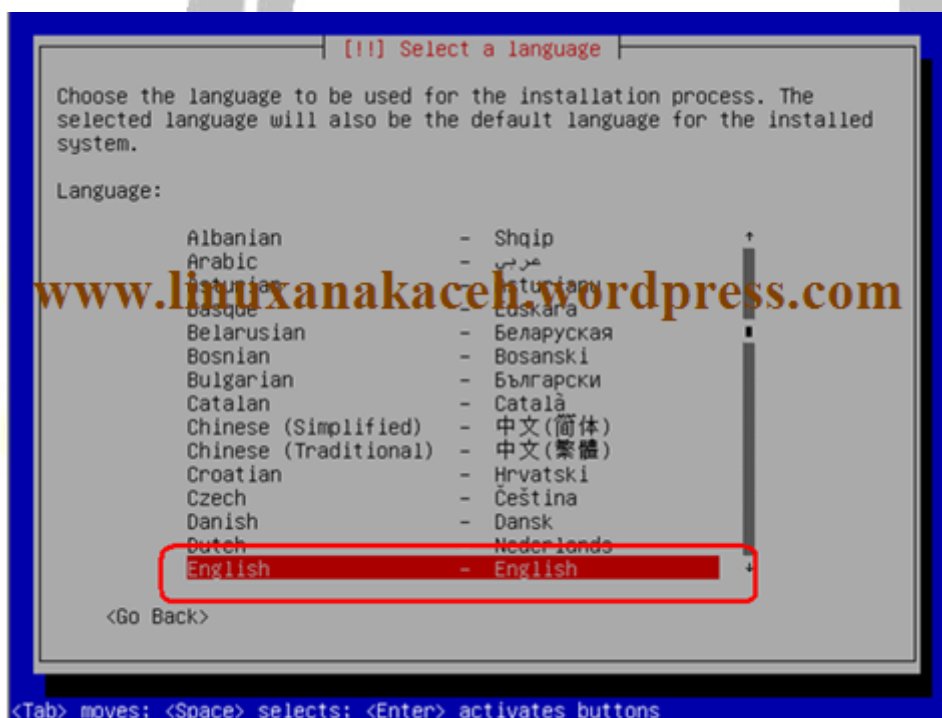


CARA INSTALL LINUX DEBIAN 6.0 SINGLE BOOT

Booting kedalam CD/DVD Debian kemudian pilih “Text Install” untuk menginstall debian 6.0

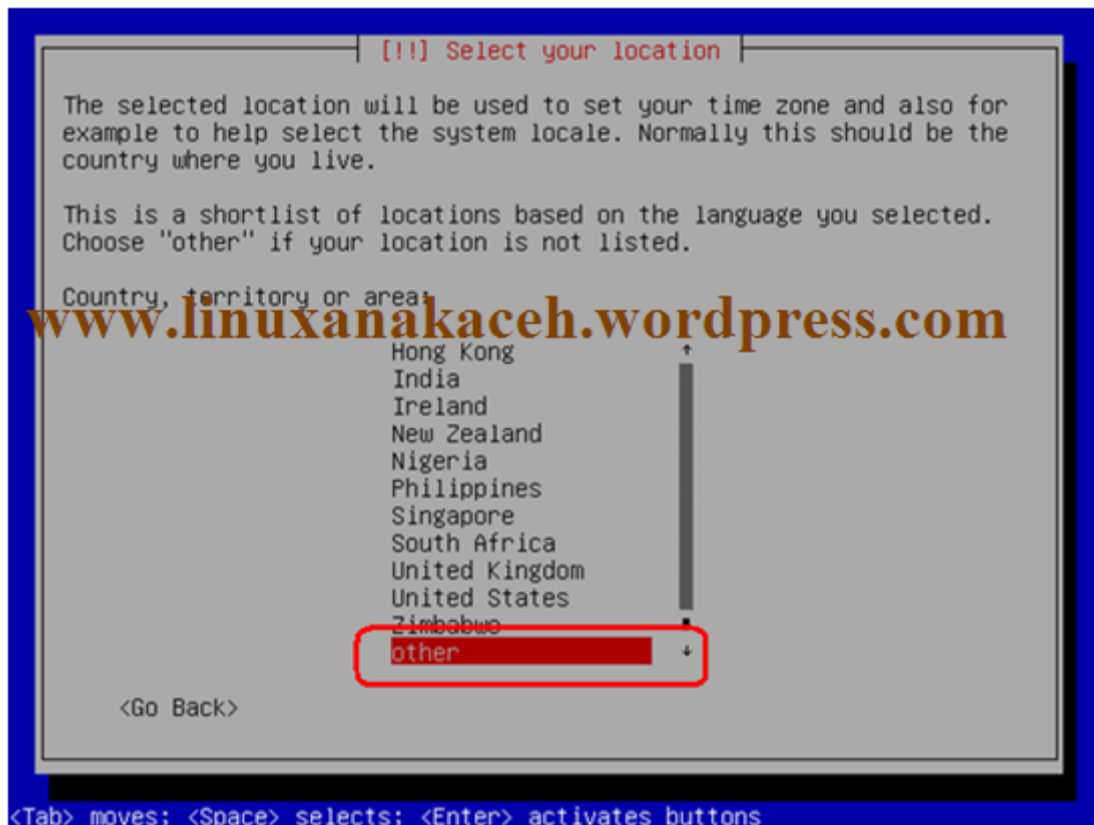


Pilih bahasa untuk media penginstalan pilih bahasa “English” untuk bahasa default nya

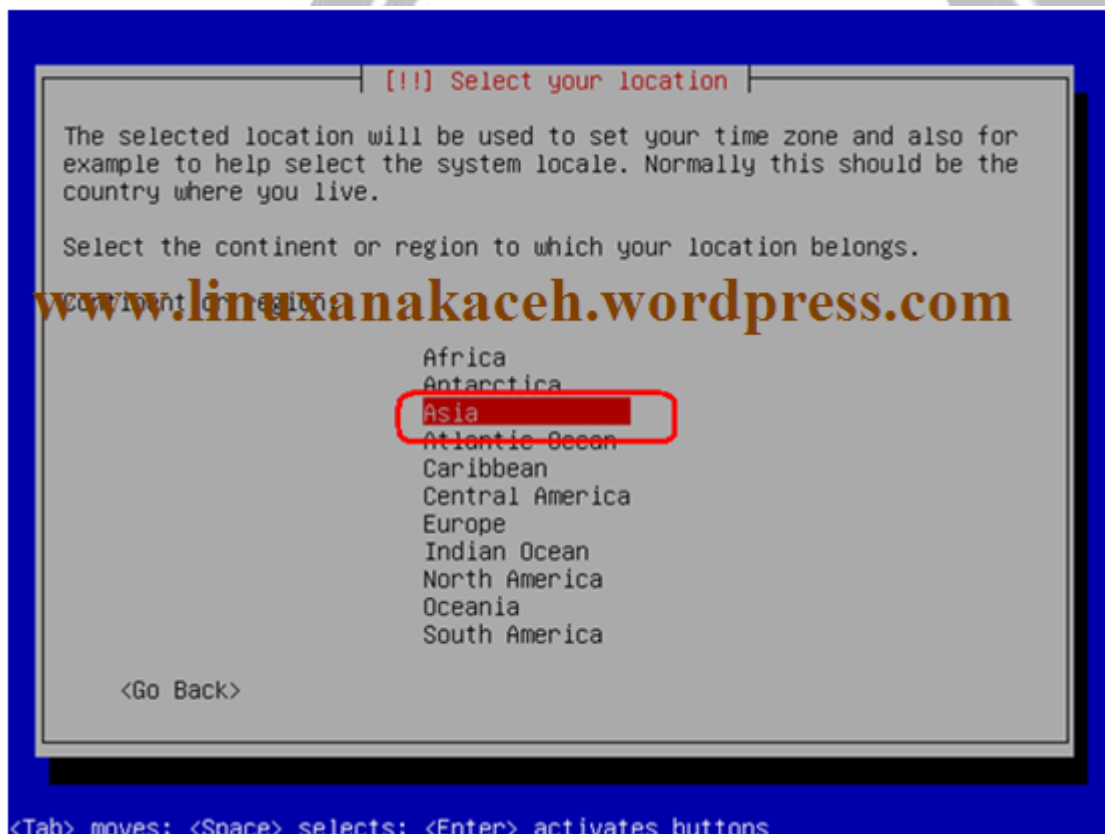




Untuk memilih area disini tidak tersedia area Indonesia maka kita memilih "Other"

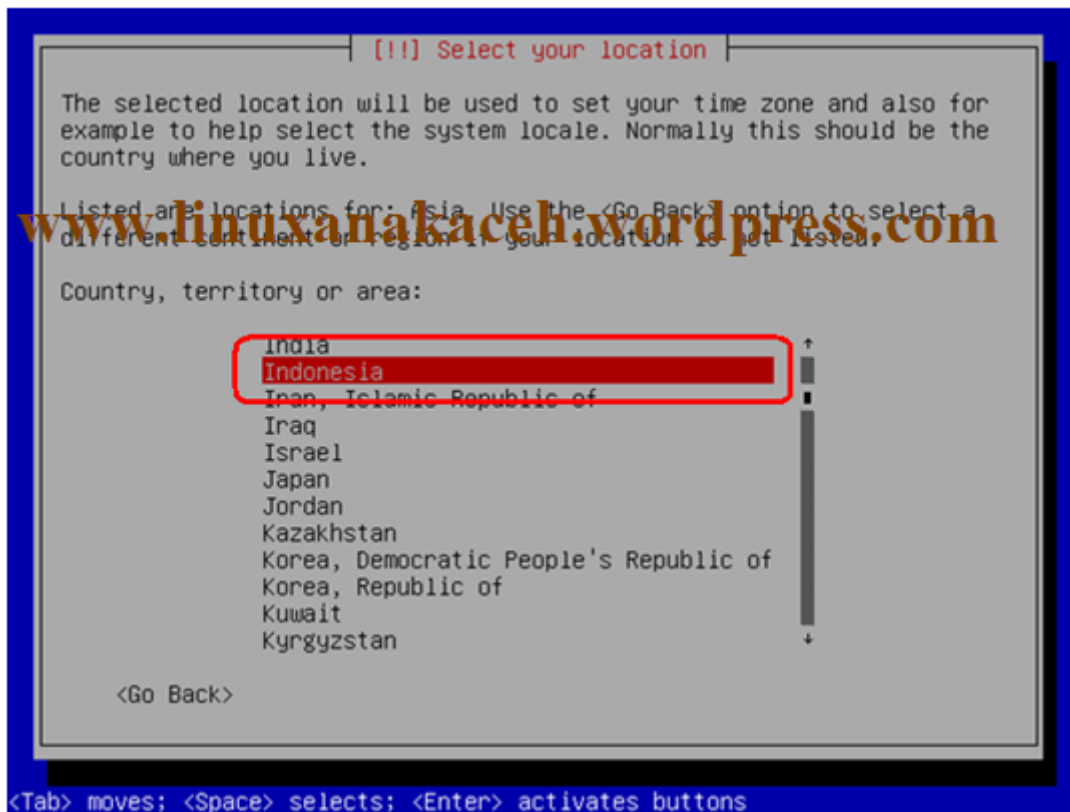


Kemudian pada "Continent or region" maka pilih "Asia"

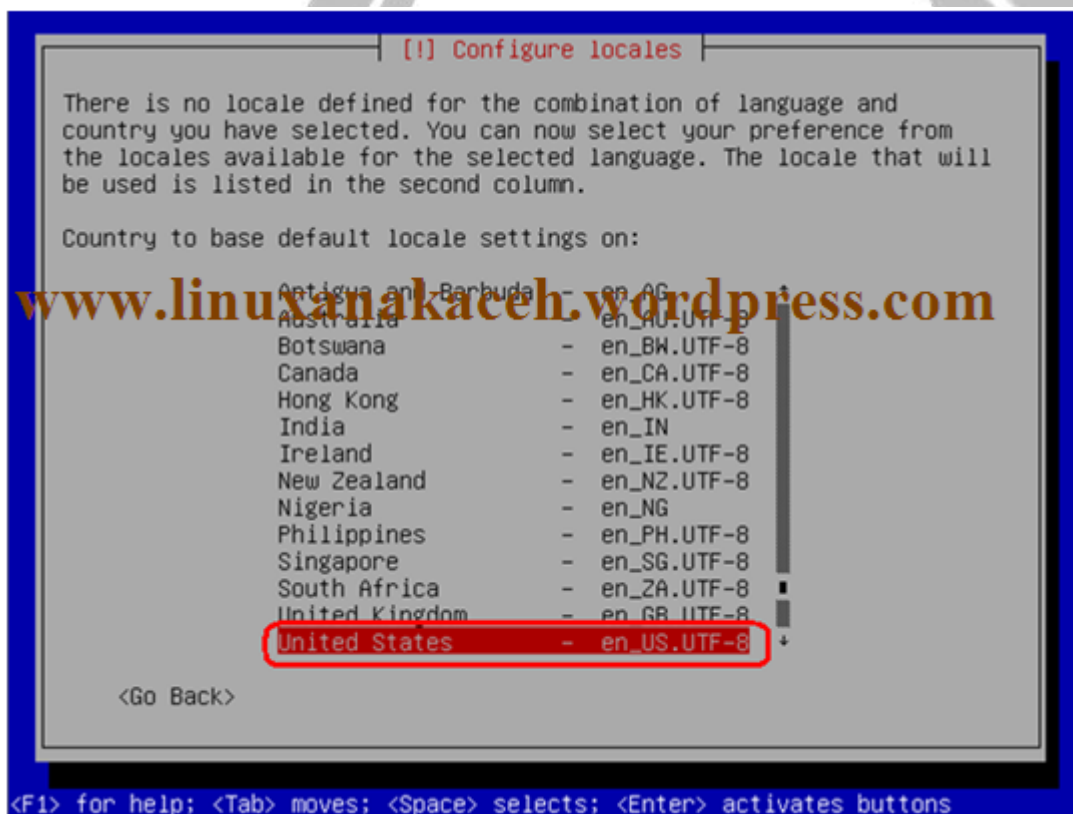




Untuk “Country, territory or area” maka pilih “Indonesia”

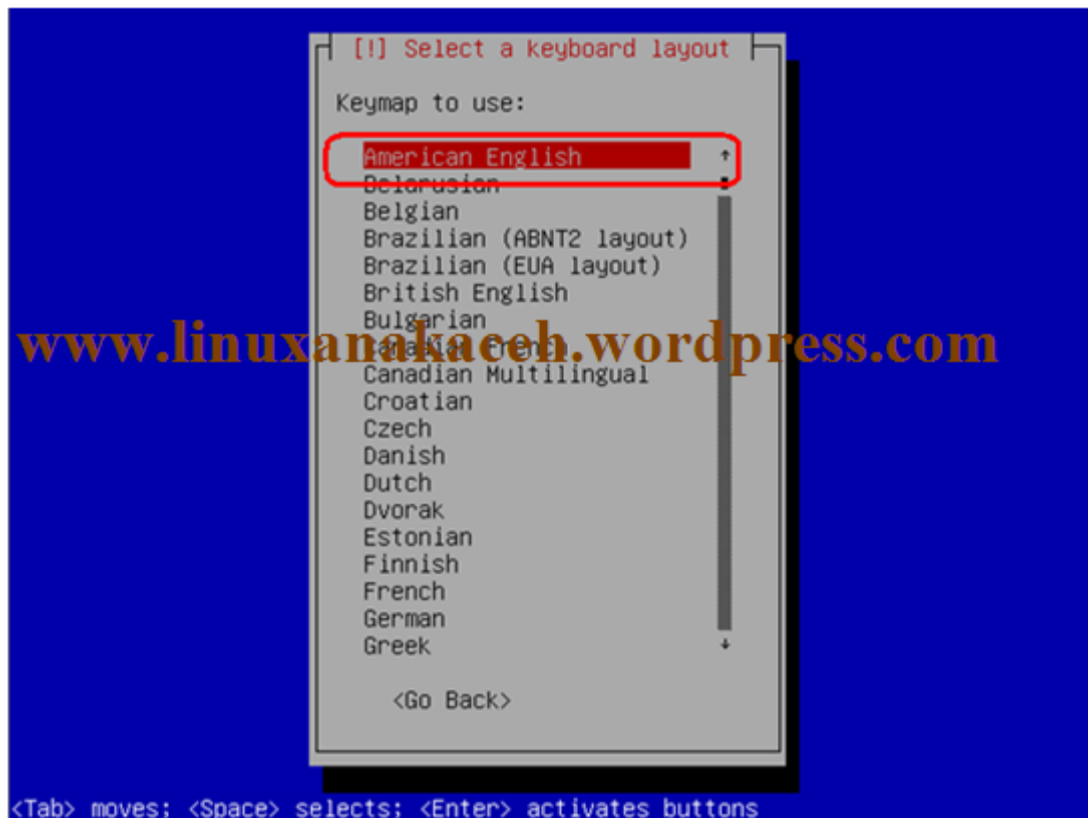


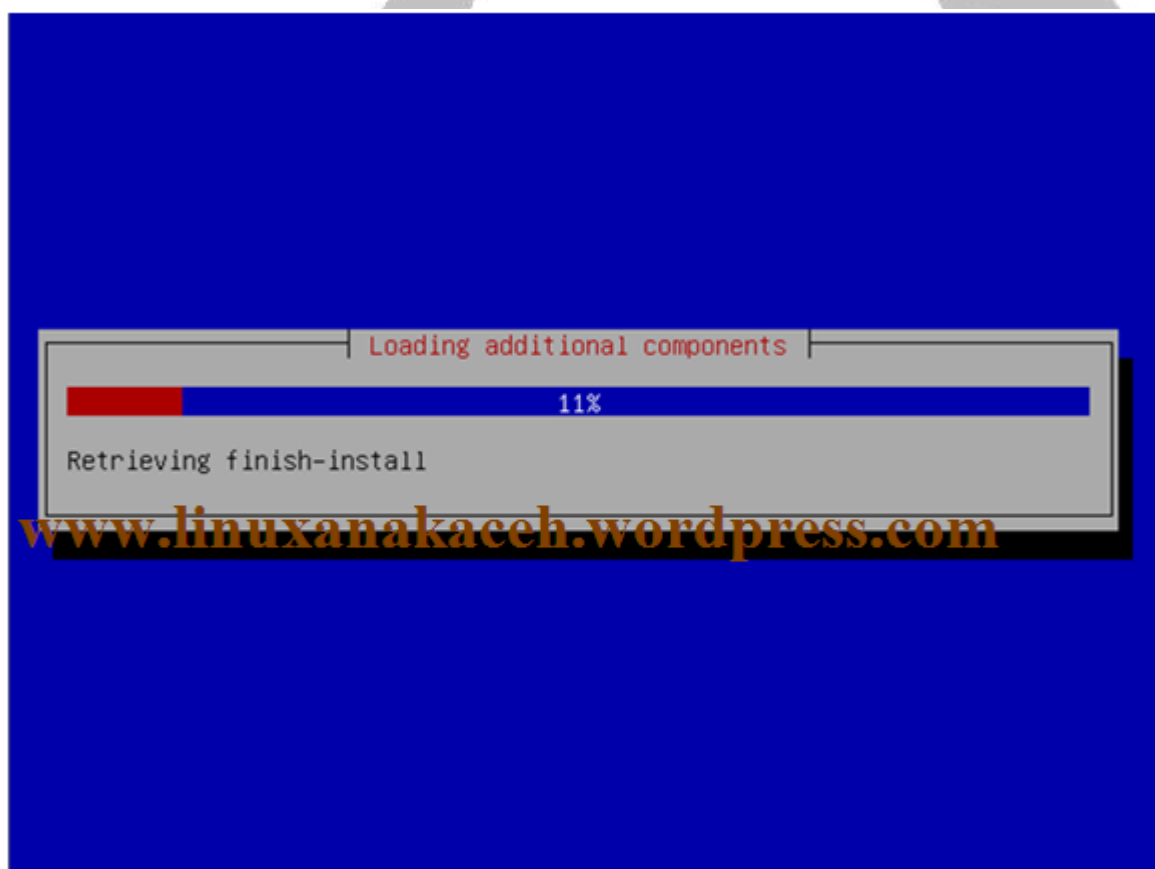
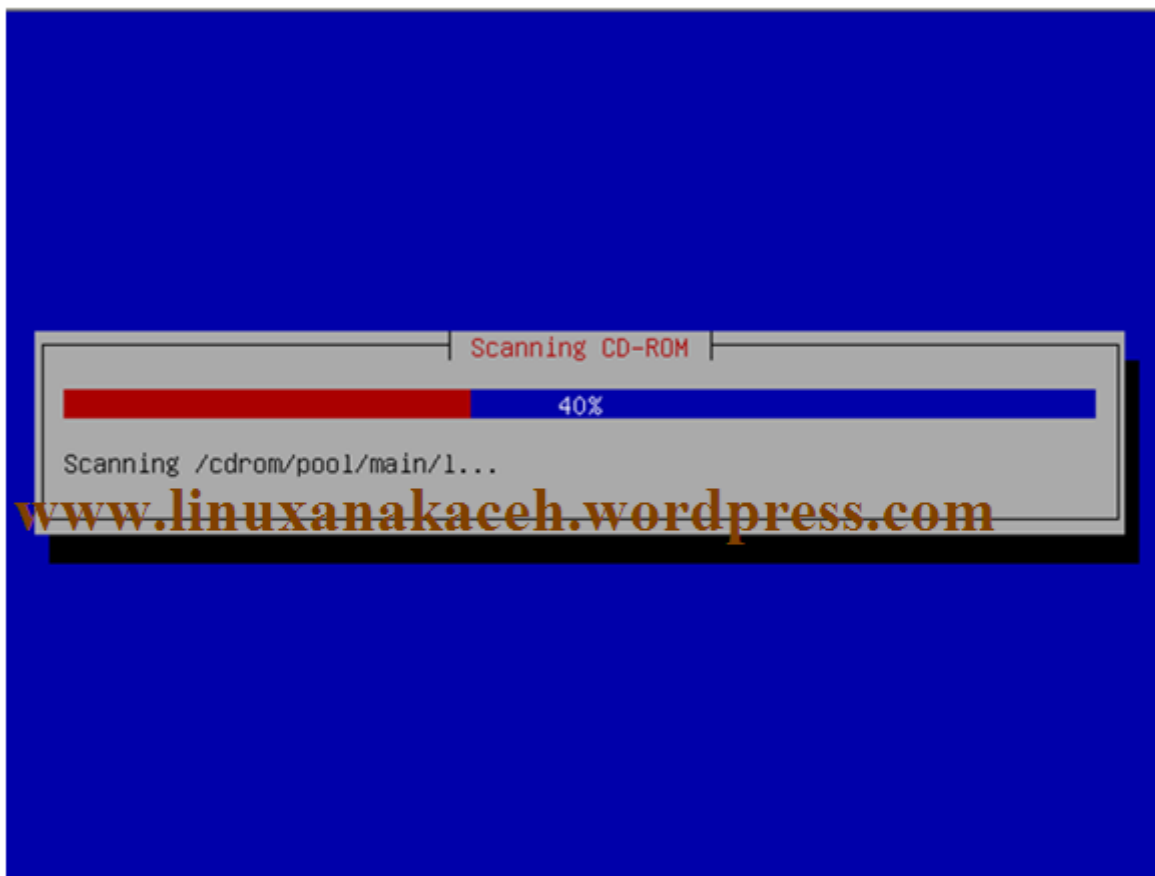
Kemudian pilih “United States - en_US.UTF-8”

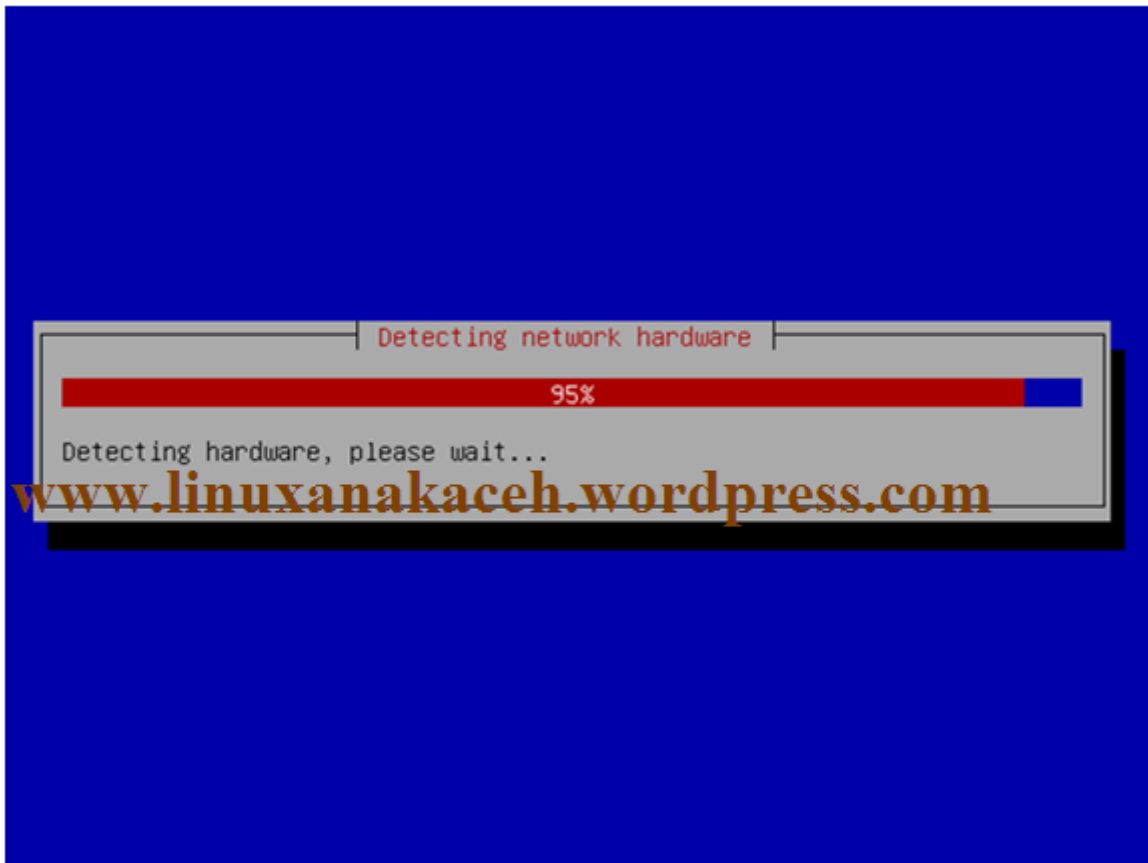




Untuk bahasa keyboard pilih “Amerixan English”

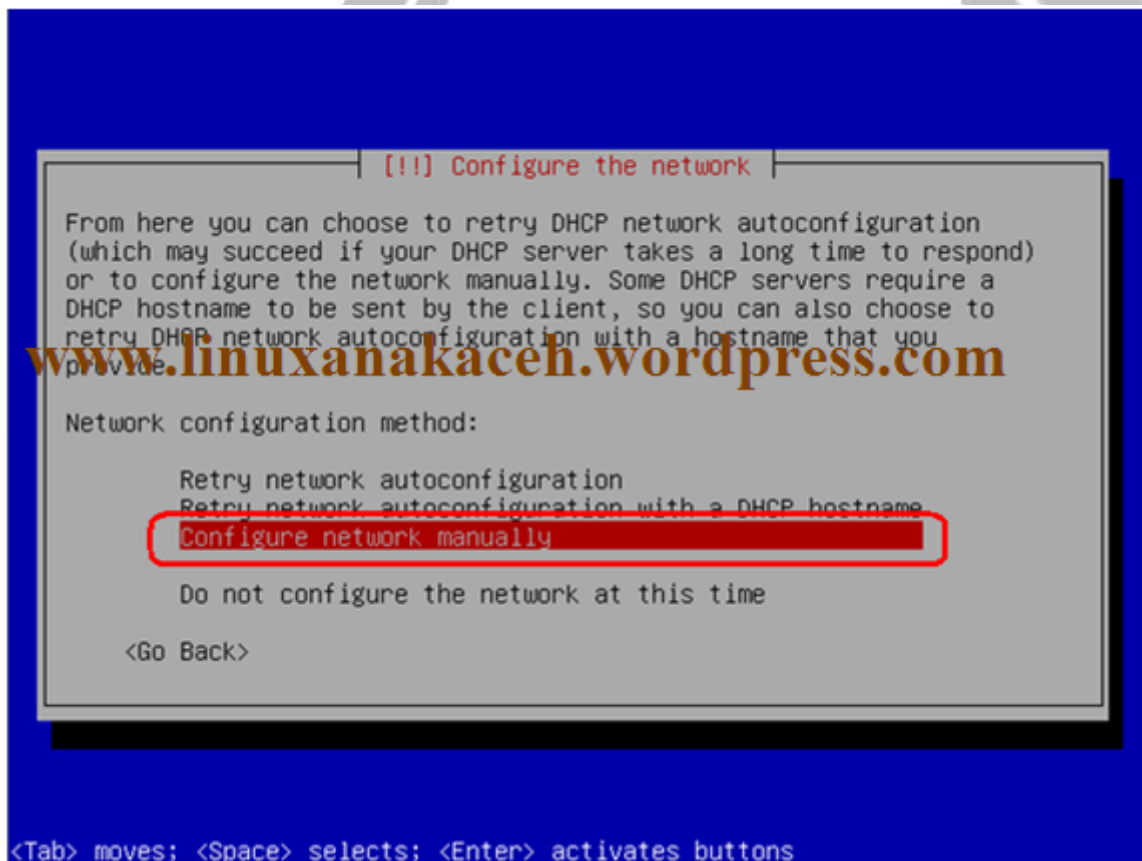






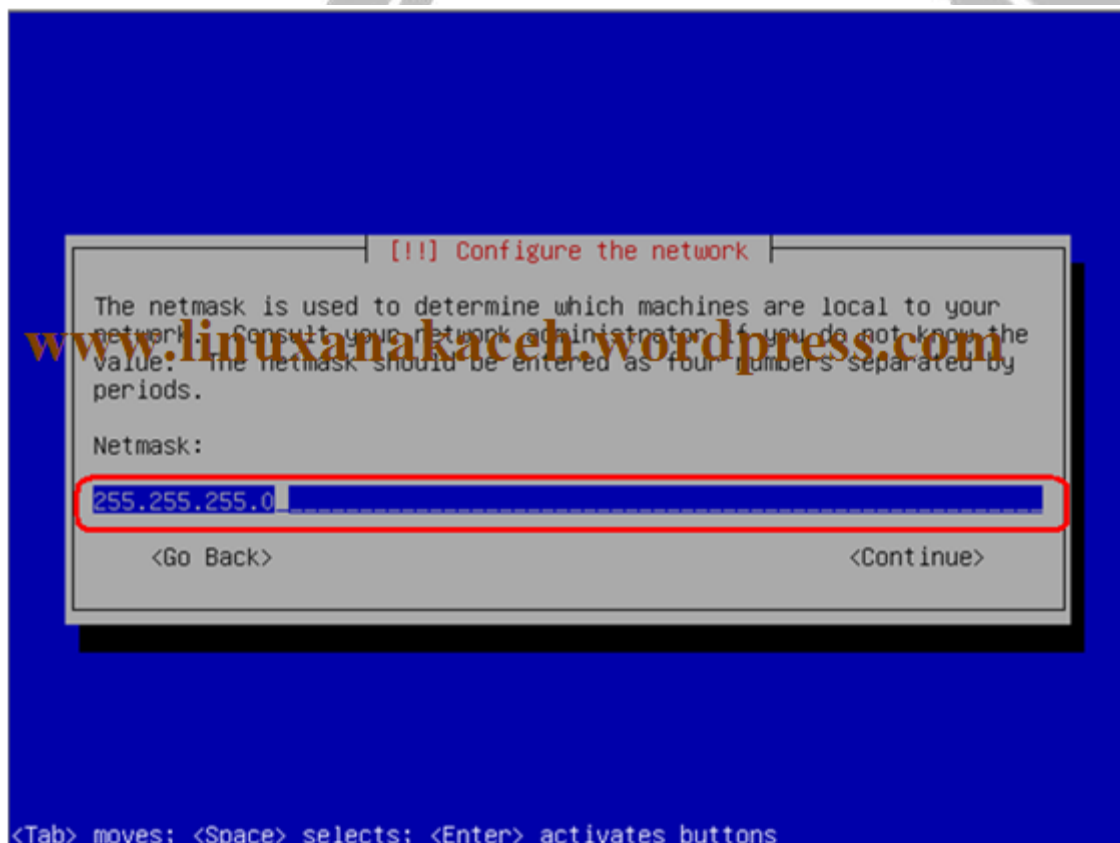
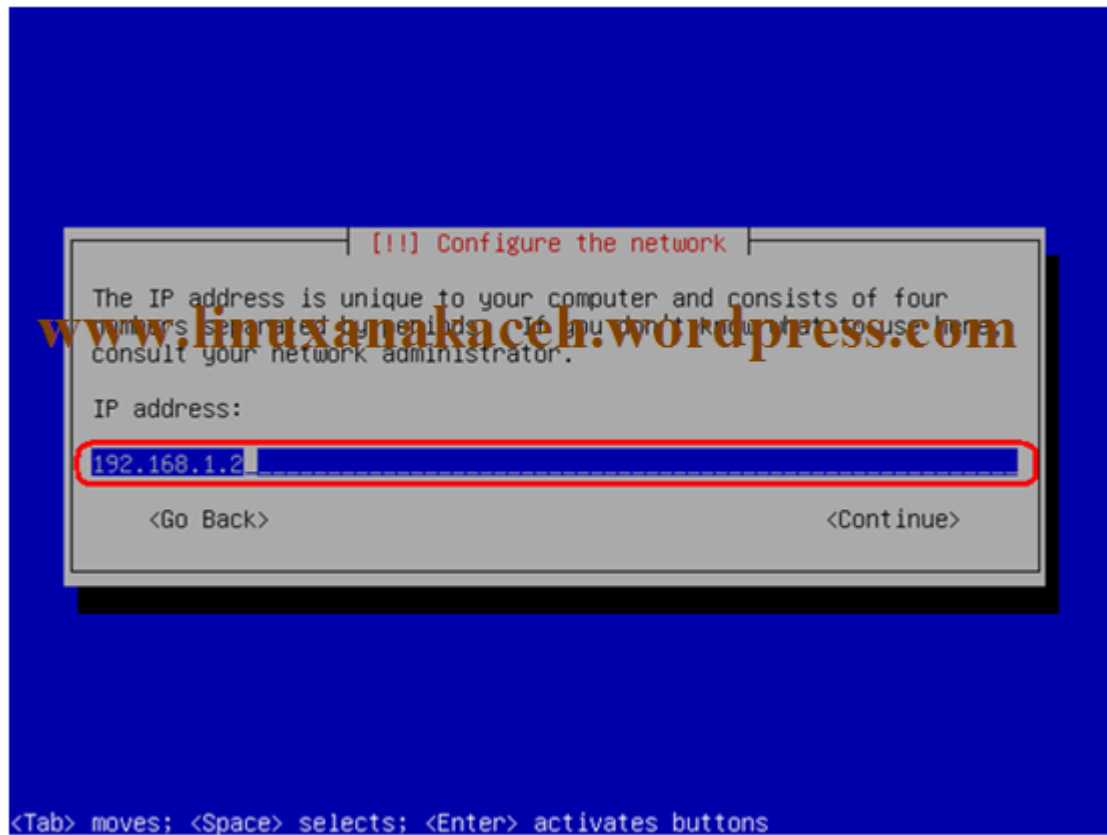


Karena kita di saat menginstall tidak terhubung dengan internet maka untuk konfigurasi network nya harus dilakukan secara manual maka pilih “Configure network manually”





Pada "IP address" isi sesuai dengan keinginan anda, sebagai contoh saya menggunakan IP kelas C yaitu 192.168.1.2





[!!] Configure the network

The gateway is an IP address (four numbers separated by periods) that indicates the gateway router, also known as the default router. All traffic that goes outside your LAN (for instance, to the Internet) is sent through this router. In some circumstances, you may have a router; in that case, you can leave this blank. If you don't know the proper answer to this question, consult your network administrator.

Gateway:

192.168.1.1

<Go Back> <Continue>

<Tab> moves; <Space> selects; <Enter> activates buttons

[!!] Configure the network

The name servers are used to look up host names on the network. Please enter the IP addresses (not host names) of up to 3 name servers in the list below. Do not use commas to separate the server in the list will be the first to be queried. If you don't want to use any name server, just leave this field blank.

Name server addresses:

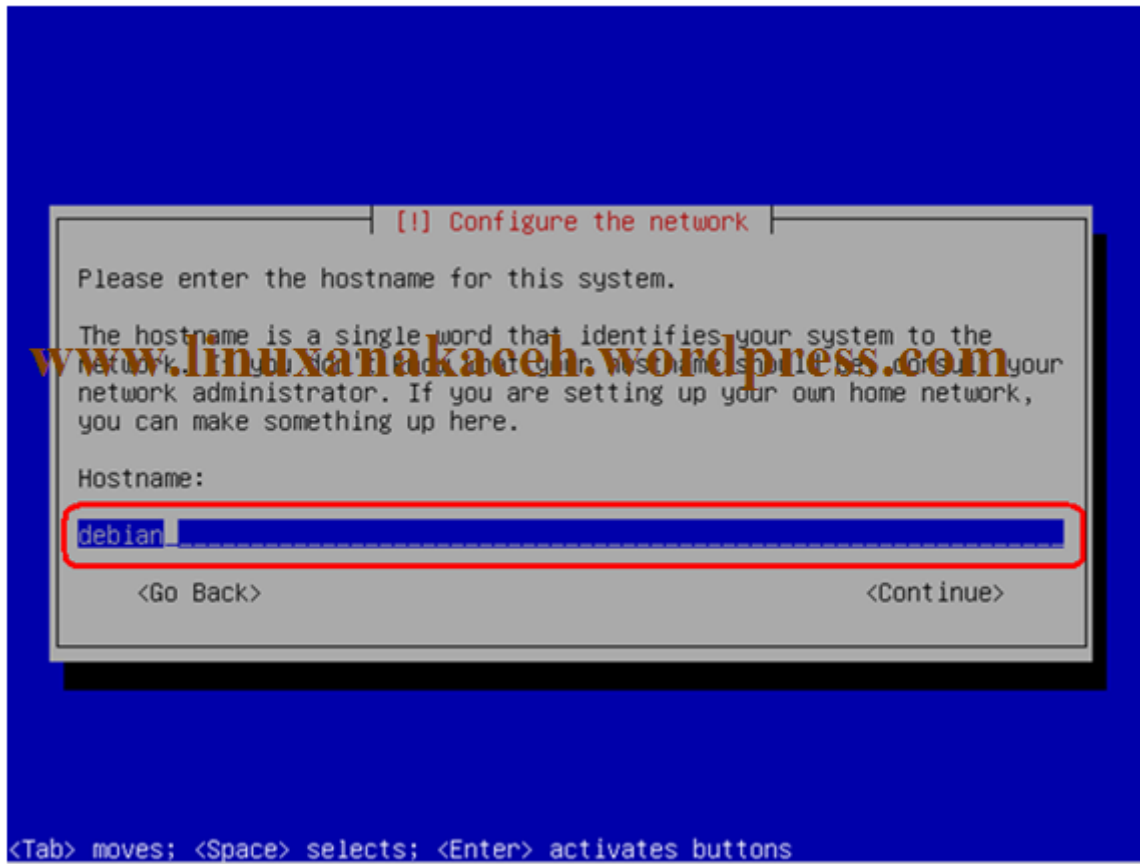
192.168.1.1

<Go Back> <Continue>

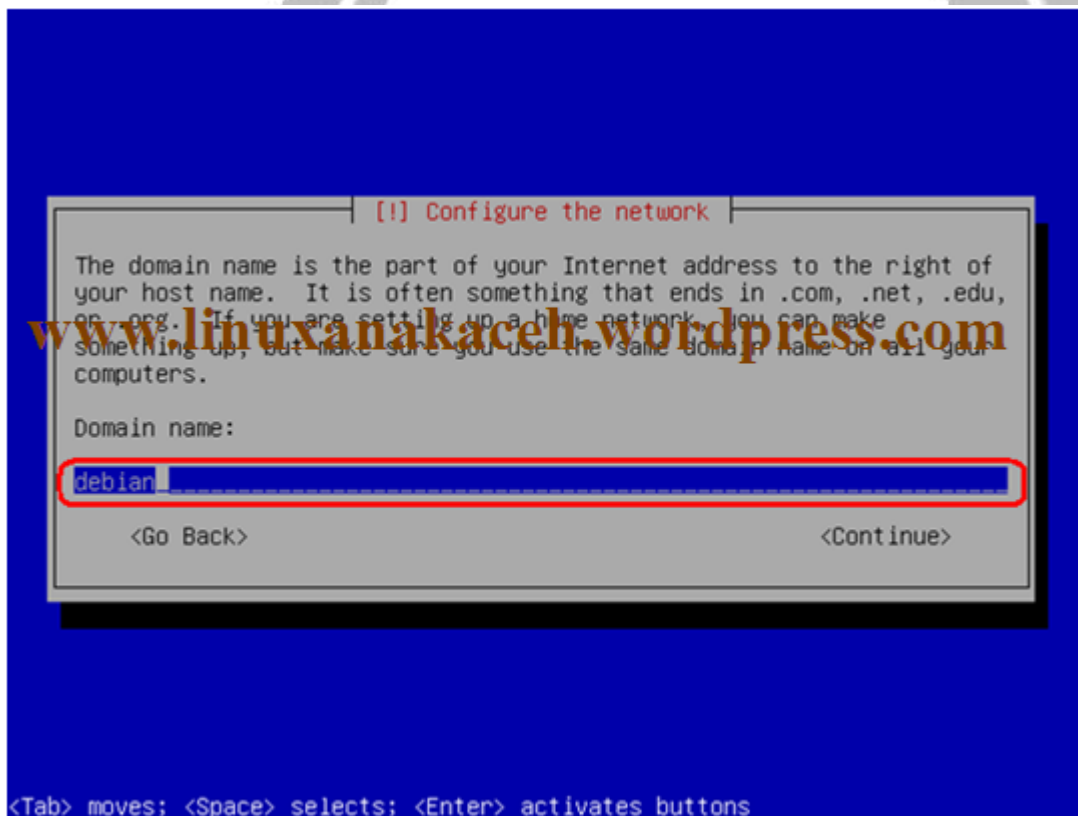
<Tab> moves; <Space> selects; <Enter> activates buttons



Untuk “Hostname” isi sesuai keinginan anda, sebagai contoh saya menggunakan “debian”



Untuk “Domain name” sesuaikan dengan “Hostname” yang di atas





Masukkan password untuk root

[!!] Set up users and passwords

You need to set a password for 'root', the system administrative account. A malicious or unqualified user with root access can have disastrous results, so you should take care to choose a root password that is not easy to guess. It should not be a word found in dictionaries, or a word that could be easily associated with you.

A good password will contain a mixture of letters, numbers and punctuation and should be changed at regular intervals.

The root user should not have an empty password. If you leave this empty, the root account will be disabled and the system's initial user account will be given the power to become root using the "sudo" command.

Note that you will not be able to see the password as you type it.

Root password:

<Tab> moves; <Space> selects; <Enter> activates buttons

Kemudian ulangi password root (password nya harus sama)

[!!] Set up users and passwords

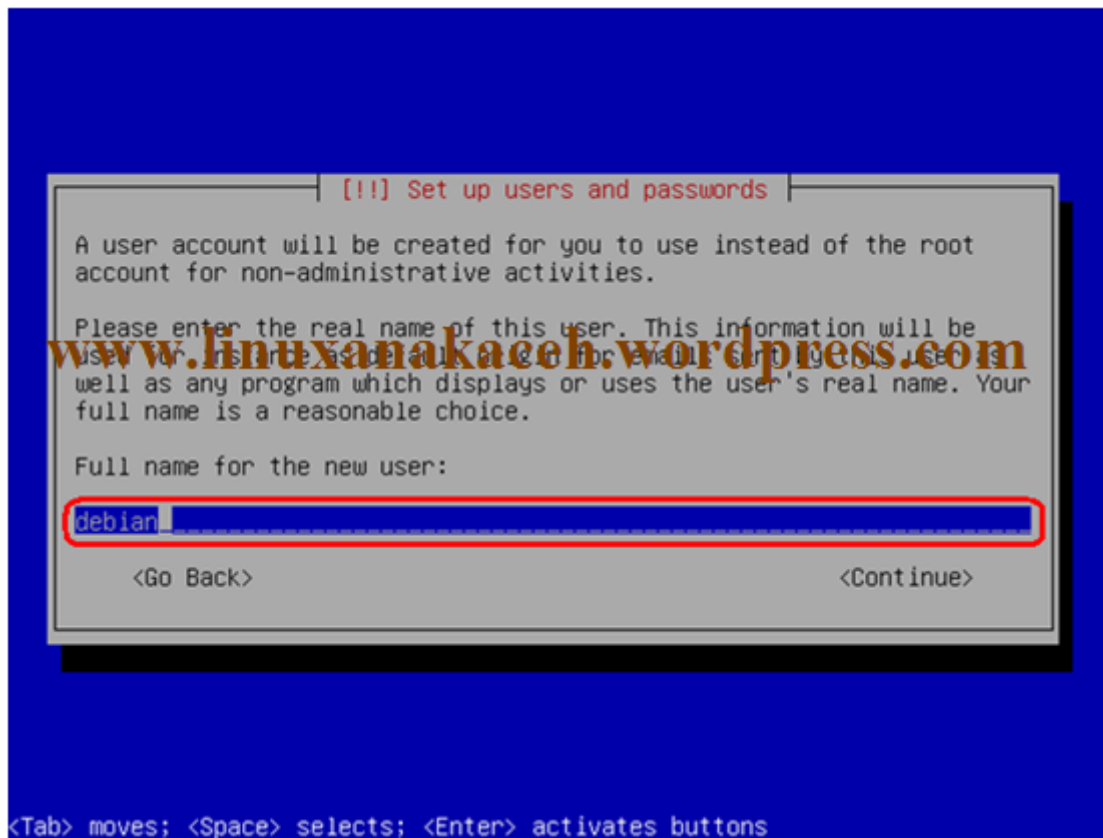
Please enter the same root password again to verify that you have typed it correctly.

Re-enter password to verify:

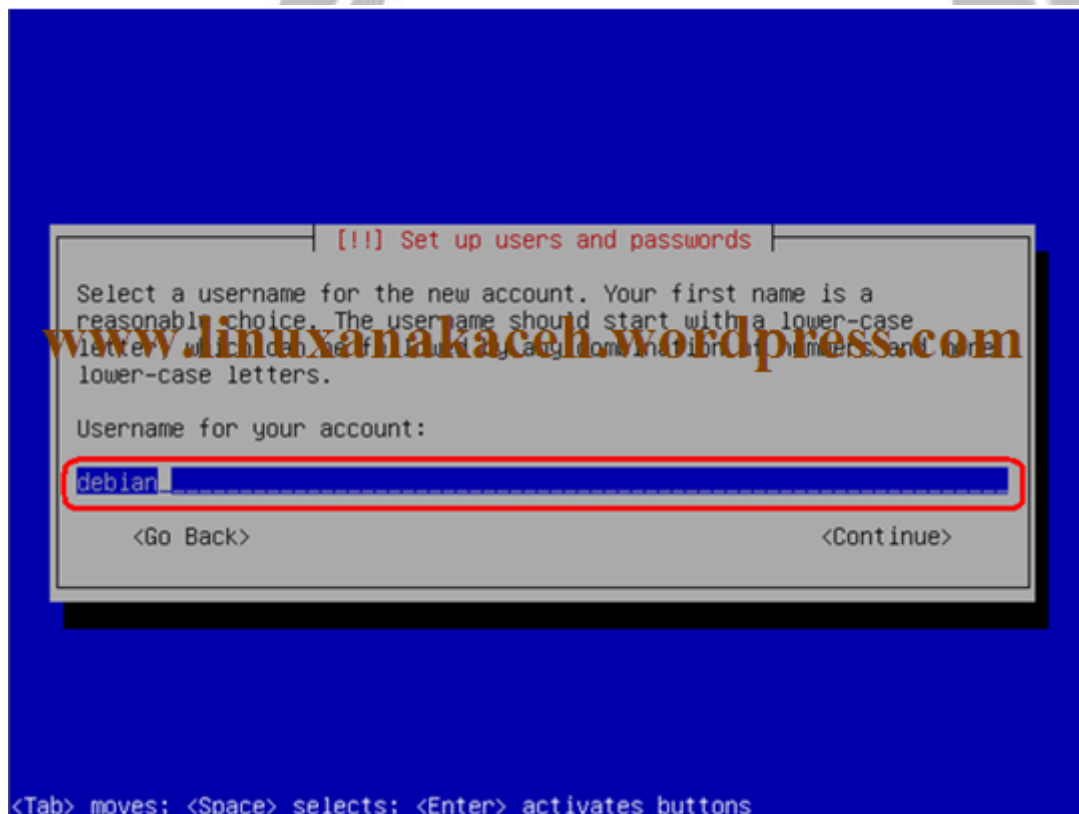
<Tab> moves; <Space> selects; <Enter> activates buttons



Masukkan nama user sesuai dengan keinginan sendiri, swbagai contoh saya mnegggunakan “debian”

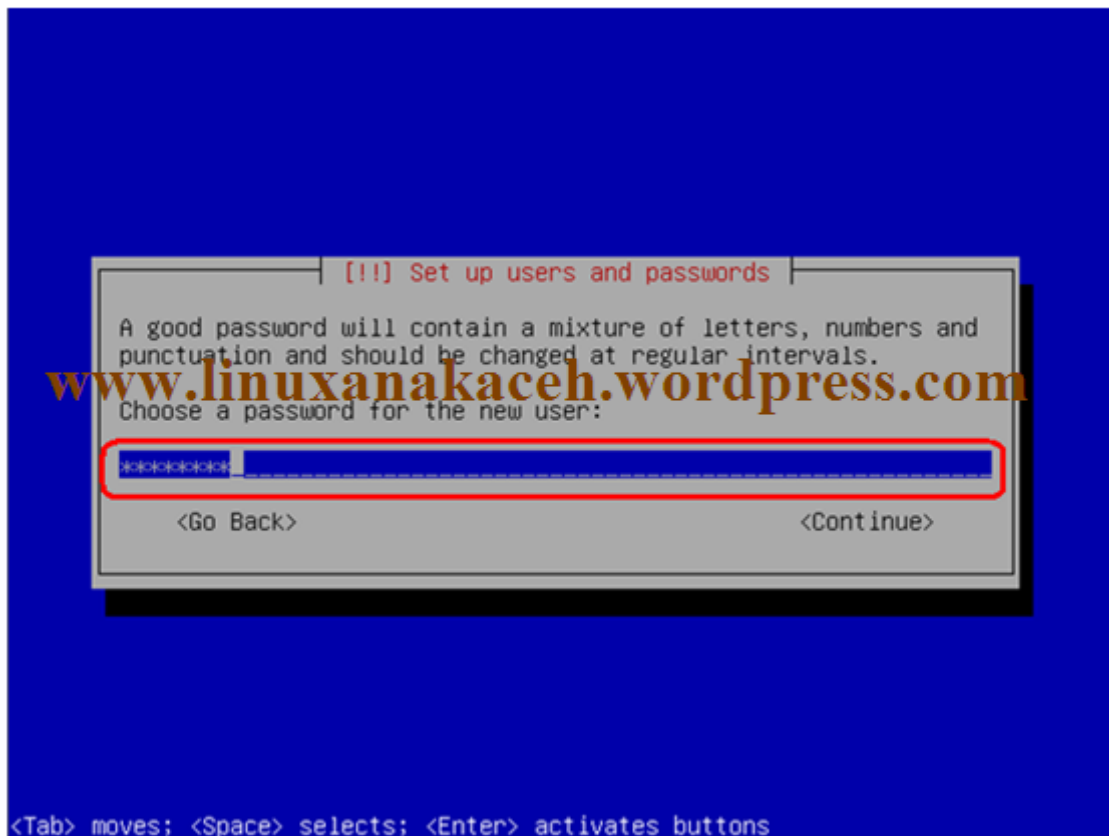


Kemudian masukan User Account

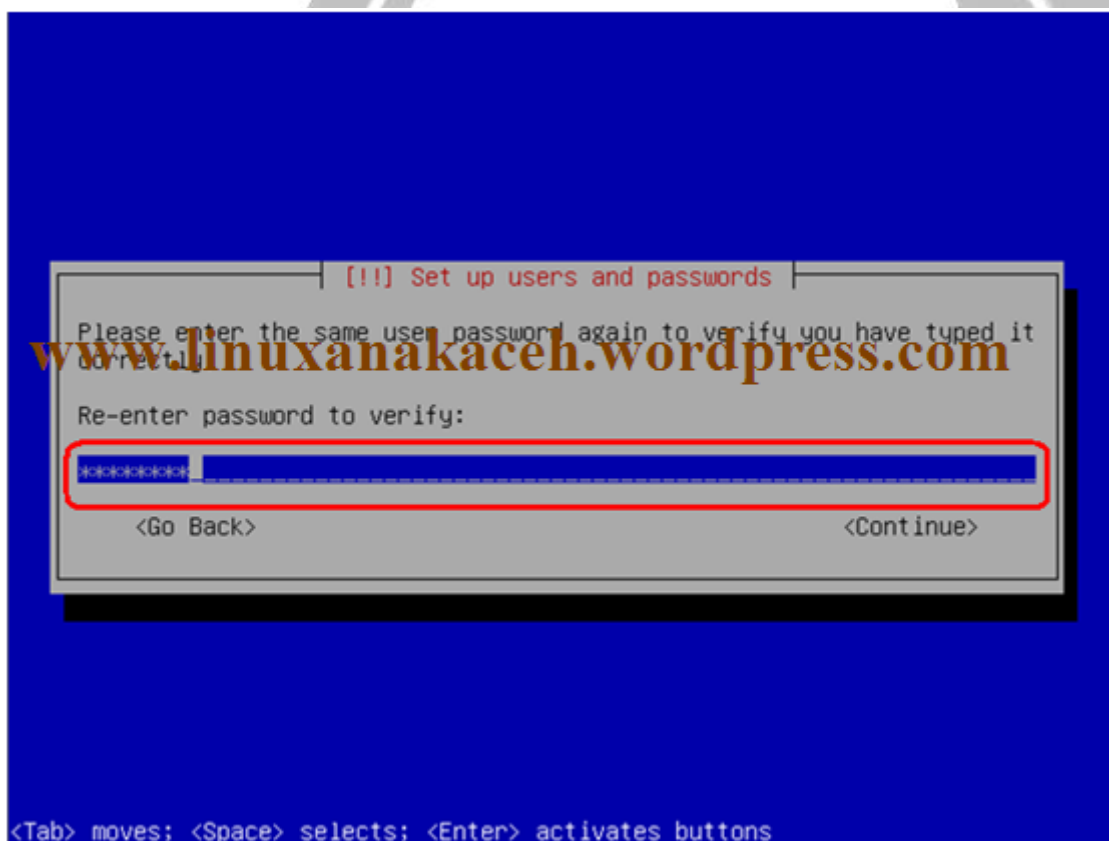


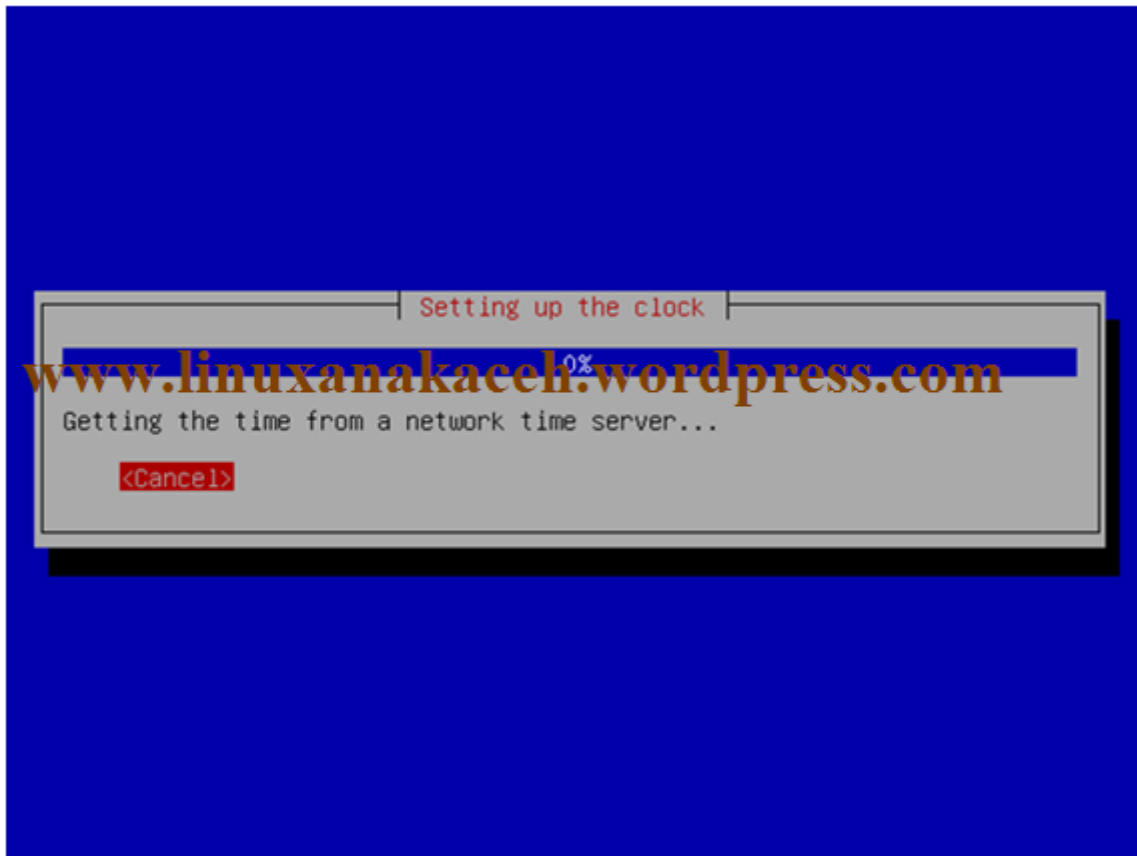


Masukkan password user

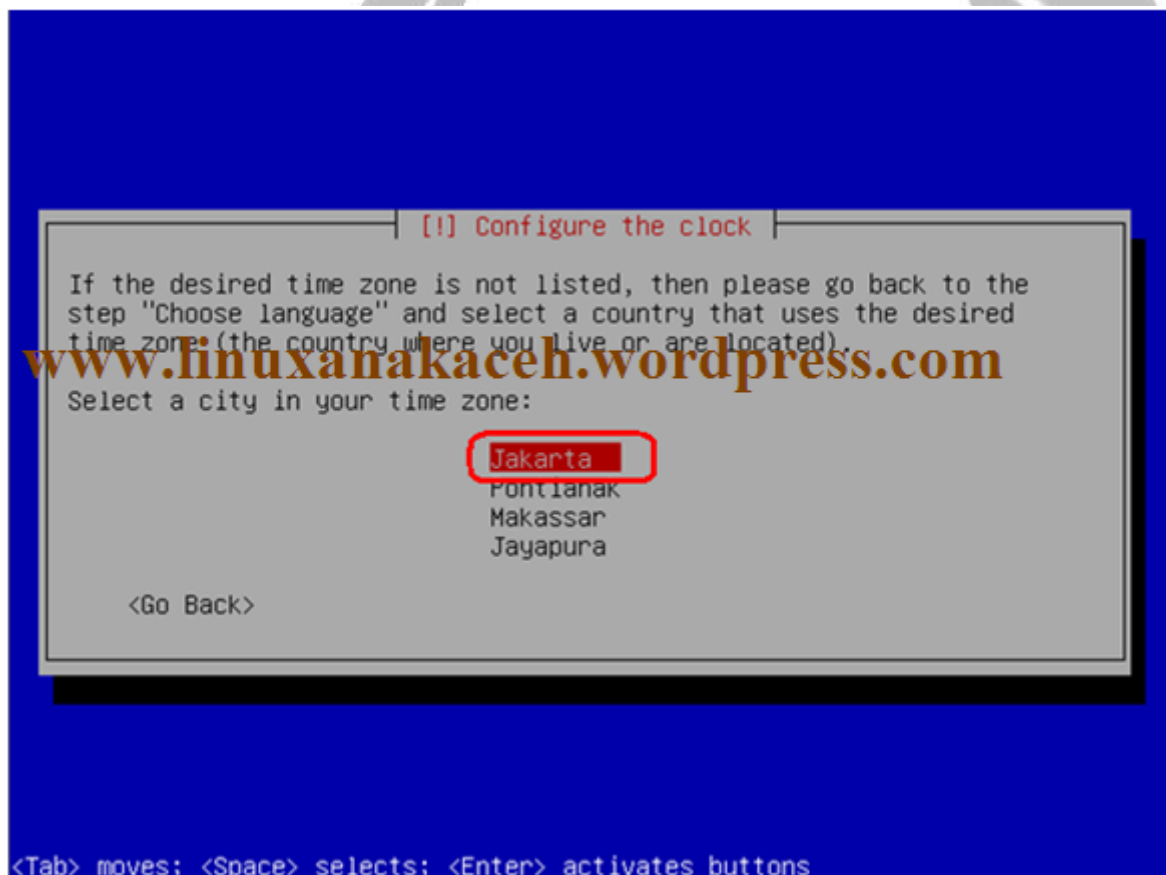


Ulangi password user

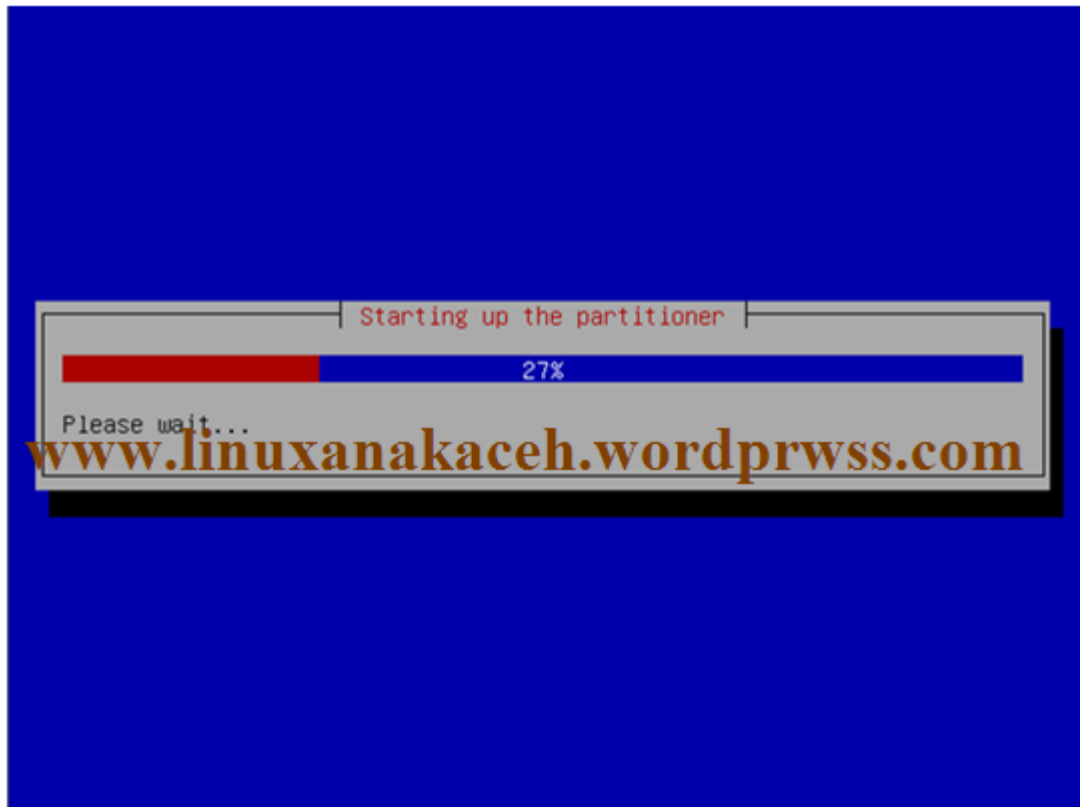




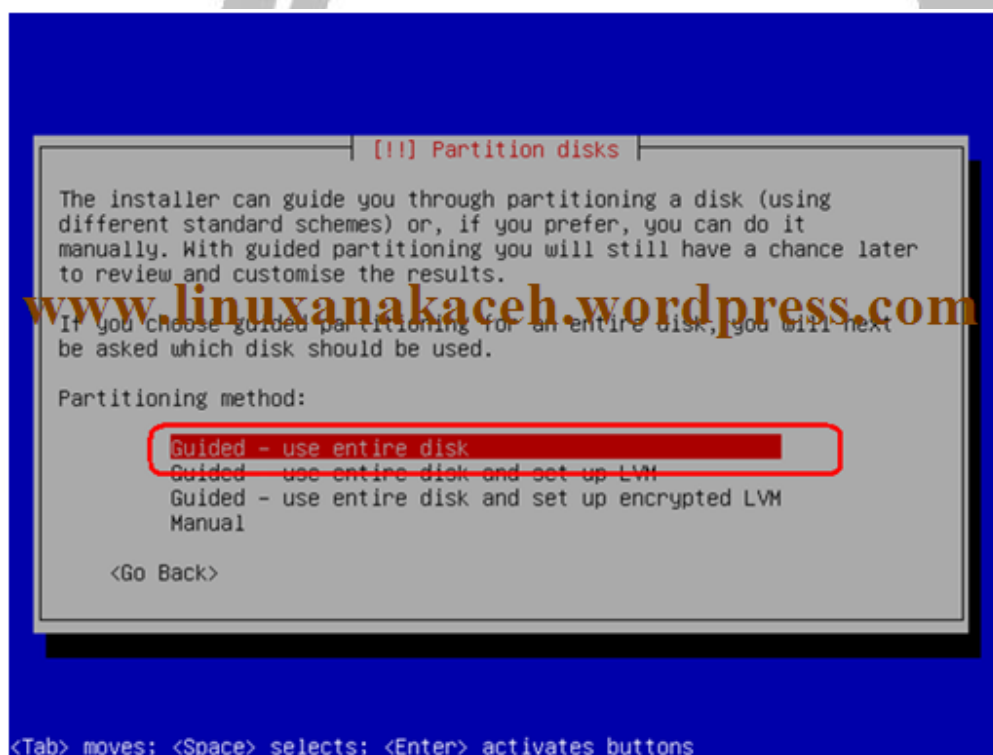
Untuk memilih zona waktu pilih "Jakarta"







Jika tidak terlalu ngerti tentang partisi linux dan jika anda tidak membuat doble boot maka pilih “Guided – use entire disk”, jika anda menggunakan media ini untuk untuk menginstal maka semua hardisk akan terhapus, jika anda ingin membuat doble boot yaitu tanpa harus menghapus salah satu system operasi misalkan “Windows” anda tidak mau terhapus maka pilih “Manual”. Disini saya tiak menjelaskan bagaimana cara membagi partisi linux debian





ini adalah semua isi hardisk yang akan menjadi media penginstallan debian

```

[!] Partition disks

Note that all data on the disk you select will be erased, but not
before you have confirmed that you really want to do this.

Select disk to partition:

SCSI1 (0,0,0) (sda) - 17.2 GB ATA Virtual HD

<Go Back>

```

<Tab> moves; <Space> selects; <Enter> activates buttons

Kemudian pilih "All files in one partition (recommended for new users)"

```

[!] Partition disks

Selected for partitioning:

SCSI1 (0,0,0) (sda) - ATA Virtual HD: 17.2 GB

The disk can be partitioned using one of several different schemes.
If you are unsure, choose the first one.

Partitioning scheme:

All files in one partition (recommended for new users)
Separate /home partition
Separate /home, /usr, /var, and /tmp partitions

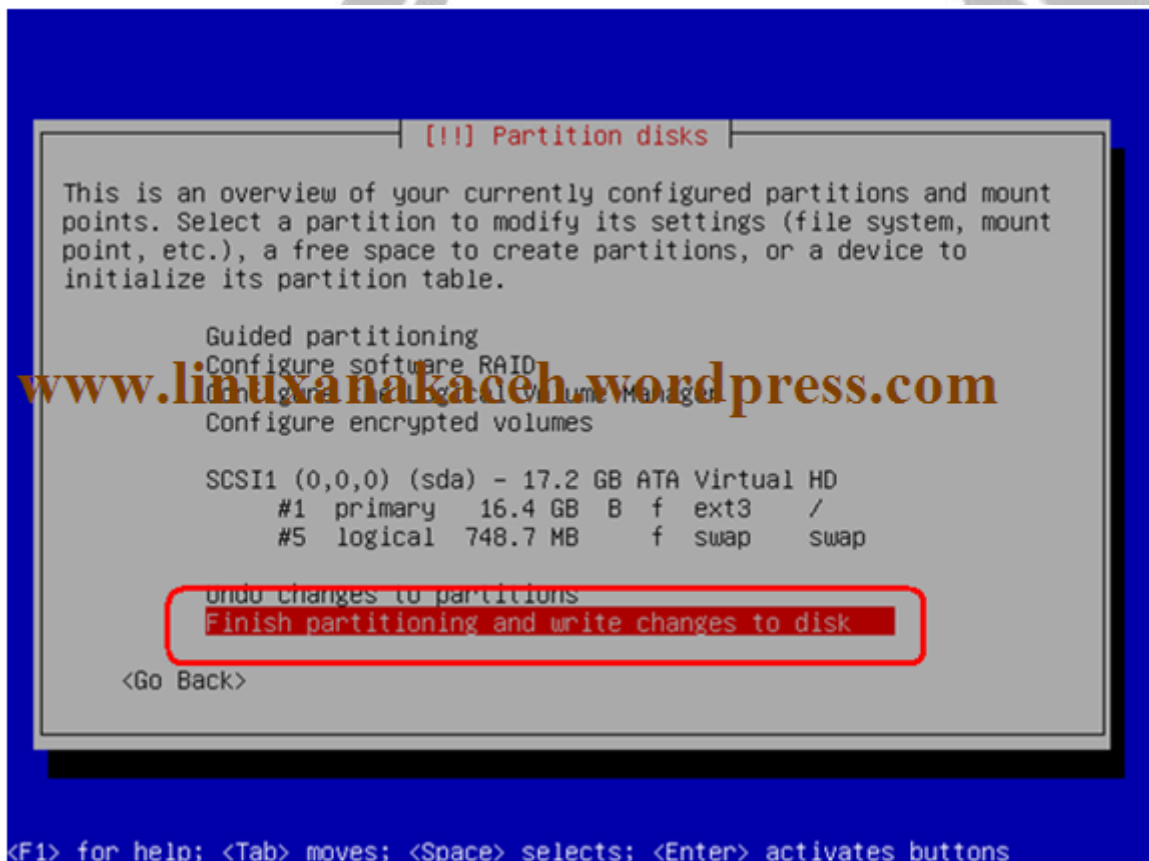
<Go Back>

```

<Tab> moves; <Space> selects; <Enter> activates buttons

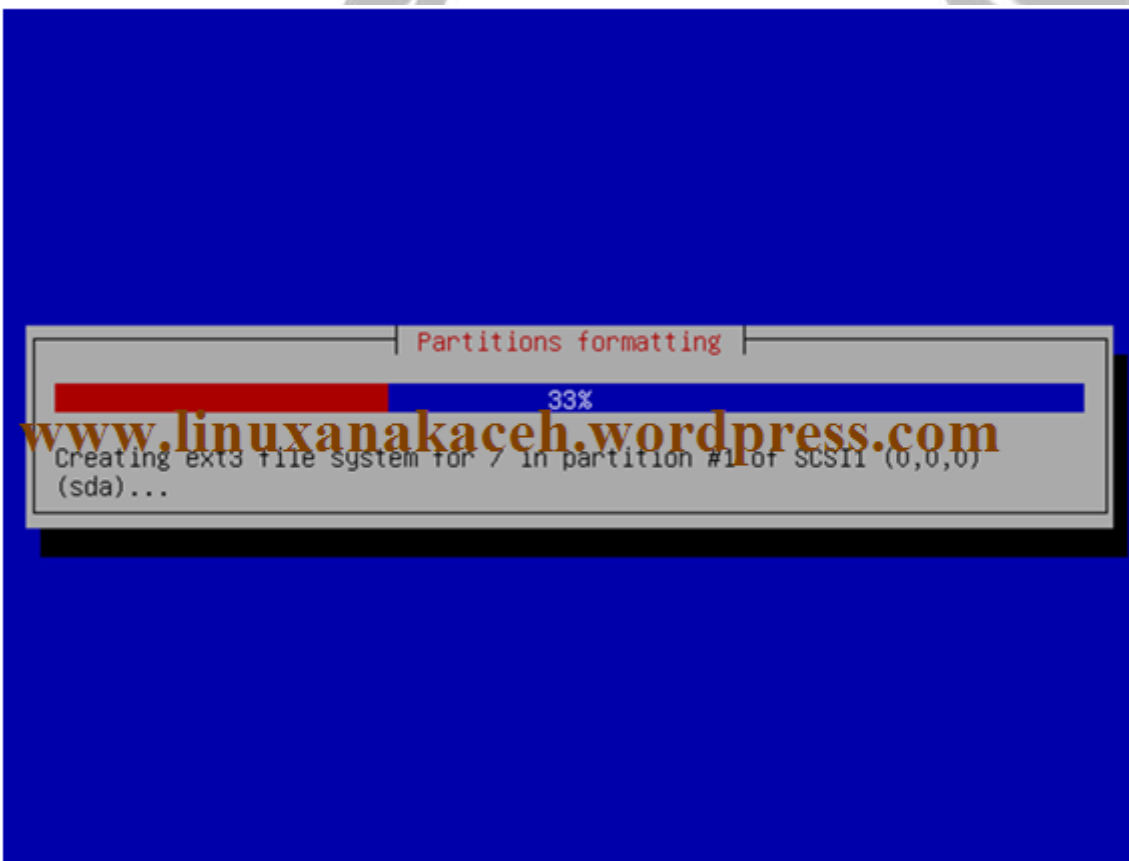
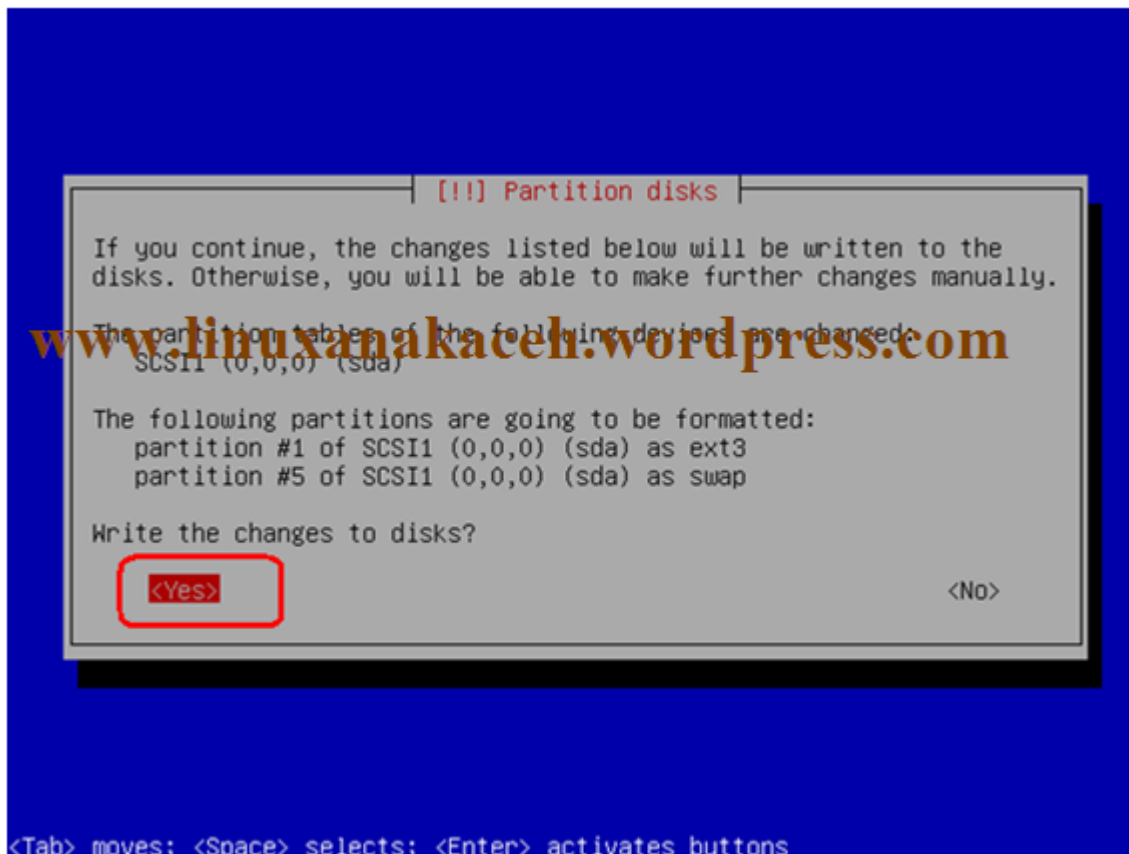


Kemudian pilih "Finish partitioning and write changes to disk")



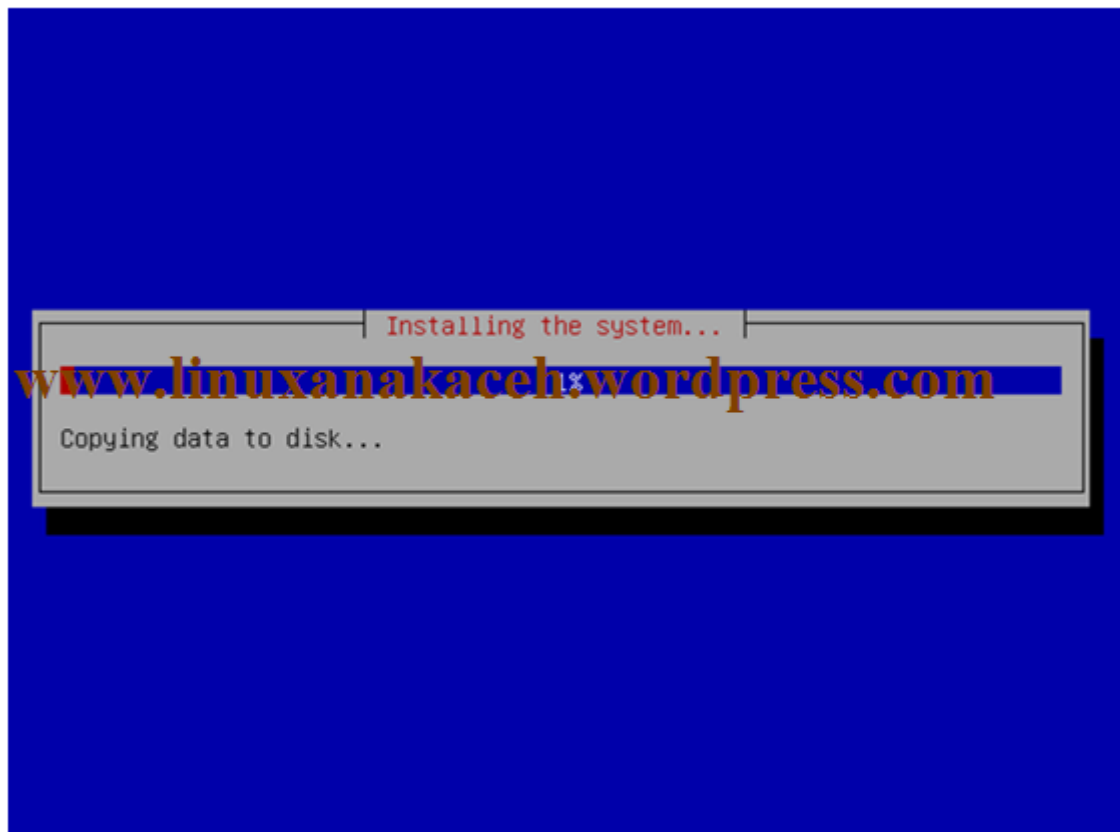


Kemudian pilih Yes untuk melanjutkan

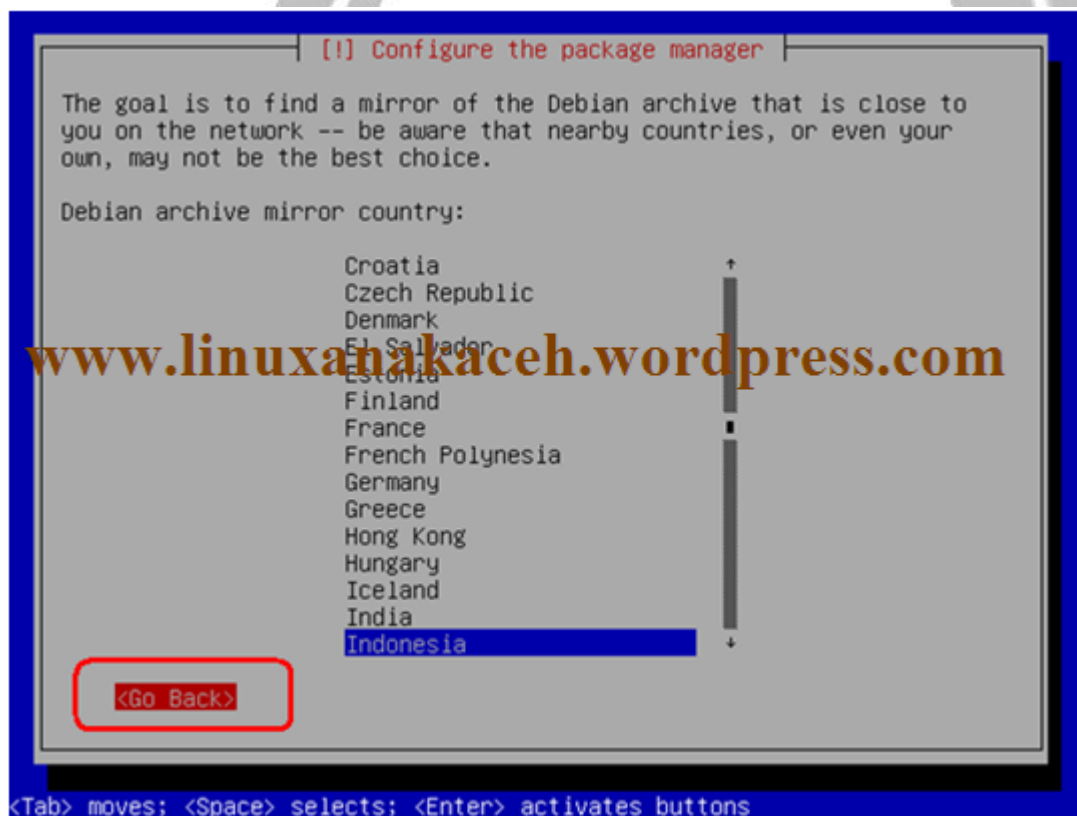




Proses instalation

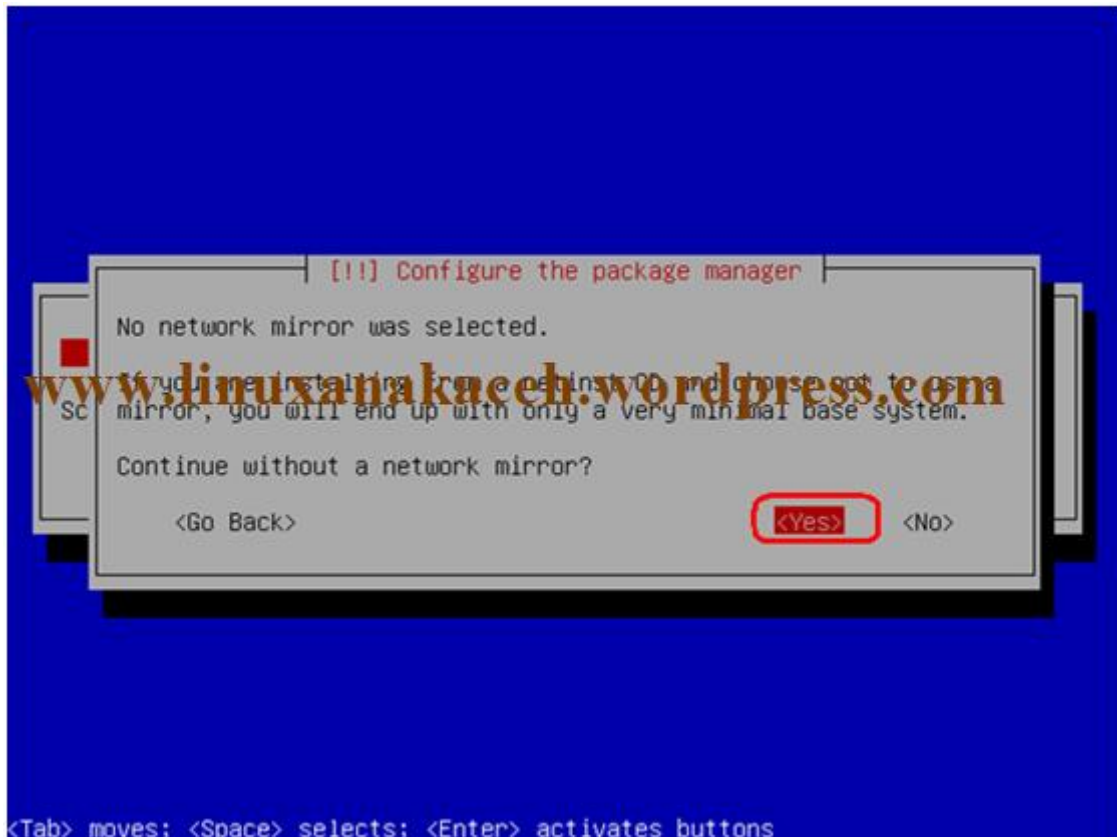


Untuk media mendownload packet kita pilih "Go back" karna kita tidak tersambung dengan internet



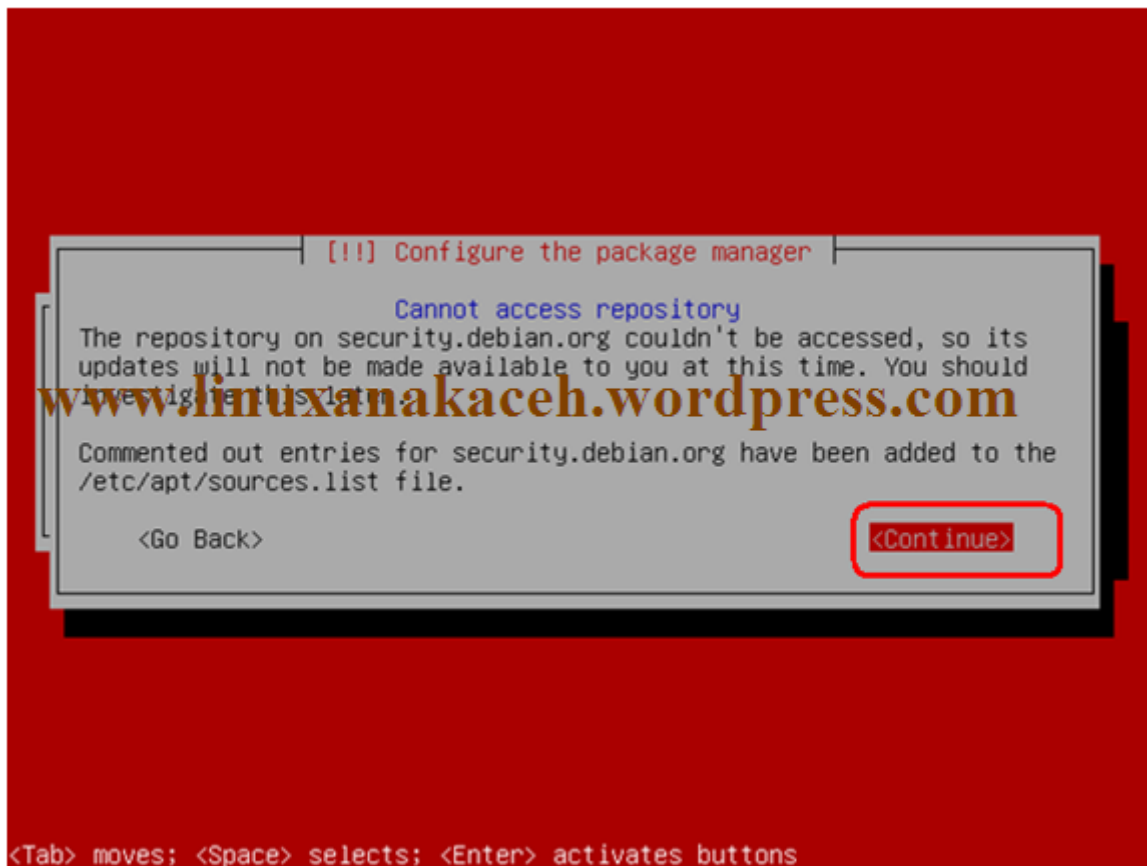


Kemudian pilih Yes

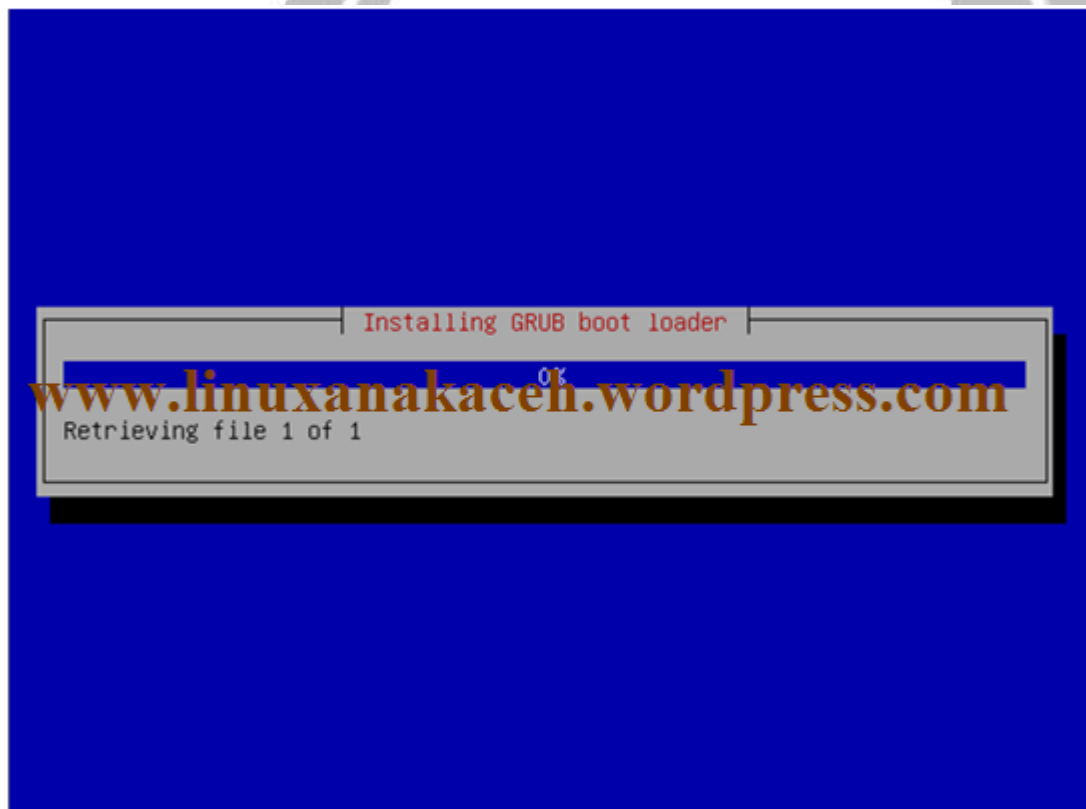




Kemudian pilih "Continue"

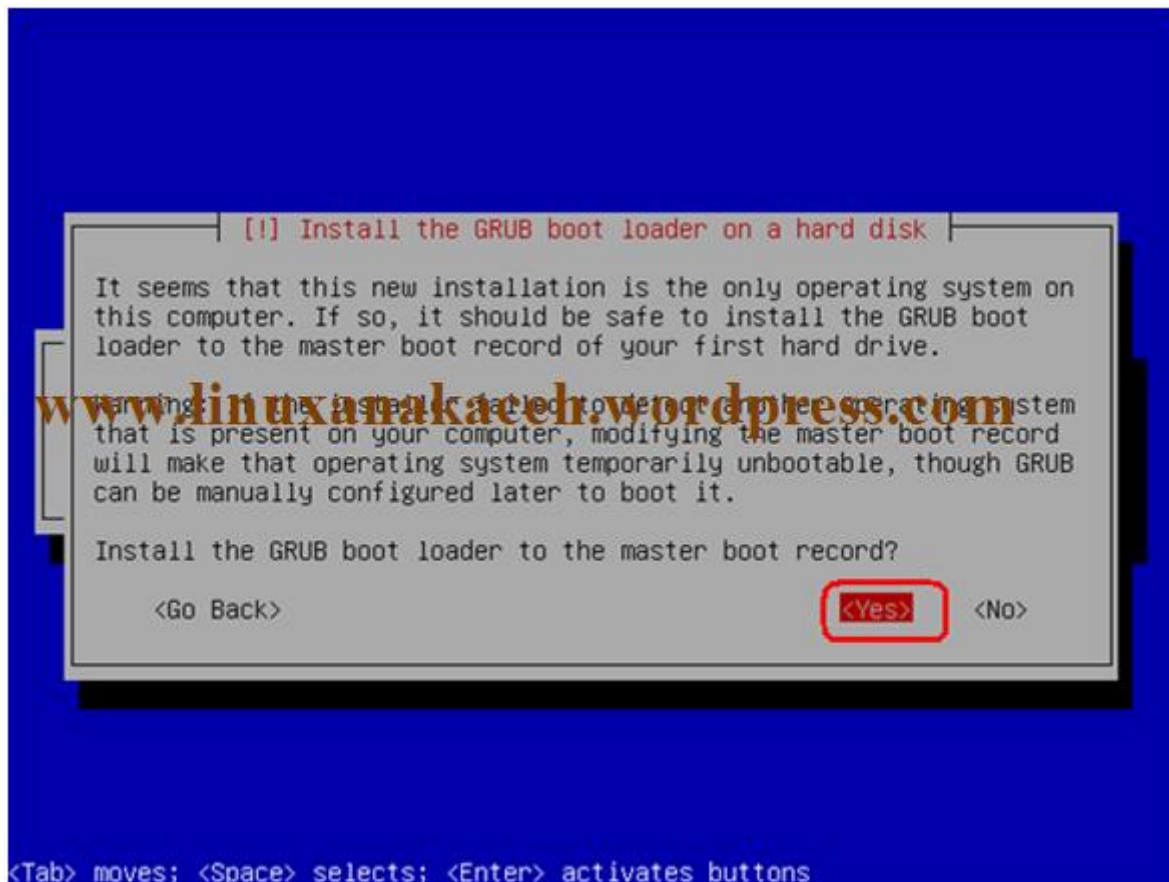


Install GRUB boot loader



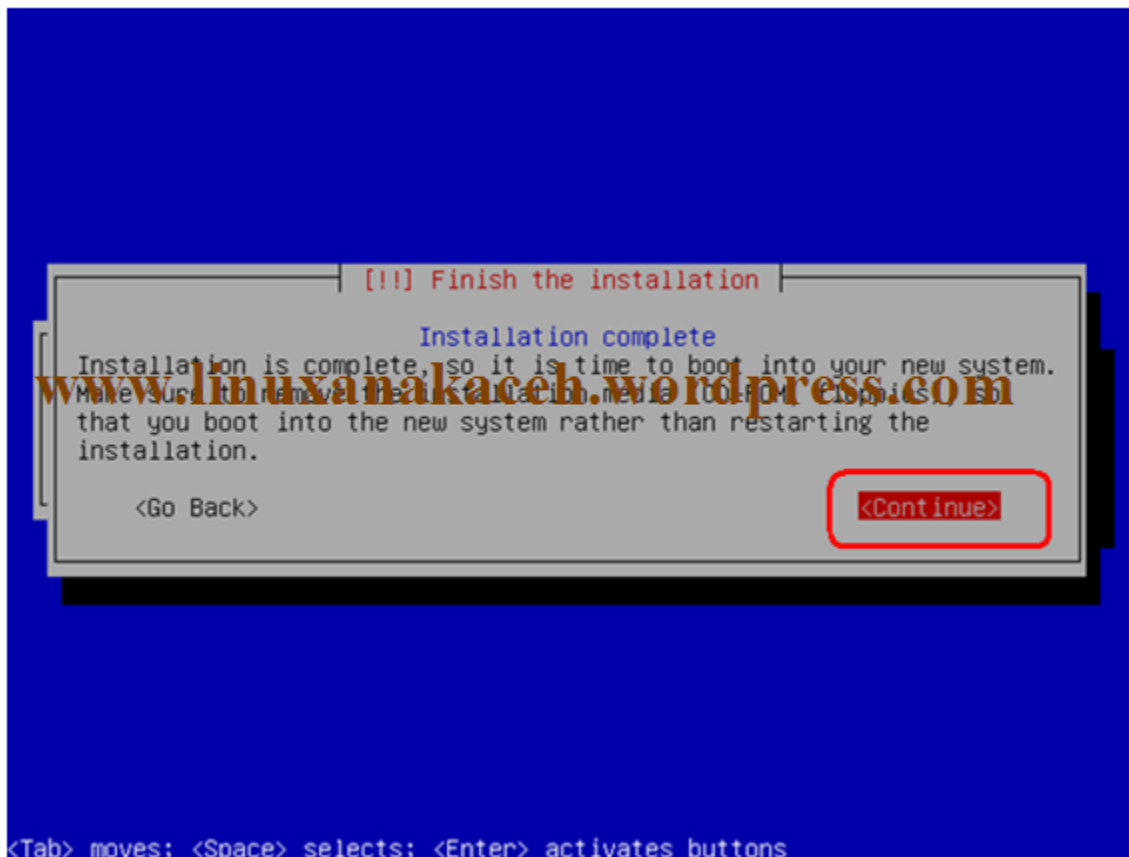


Kemudian pilih Yes

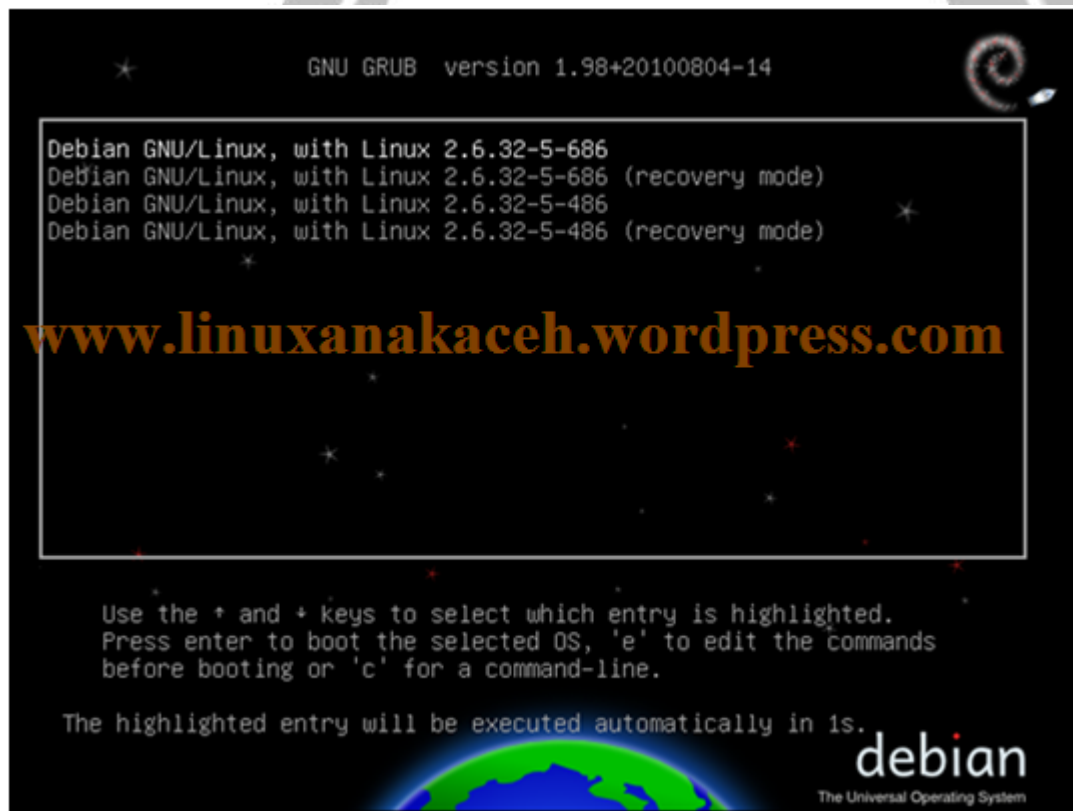




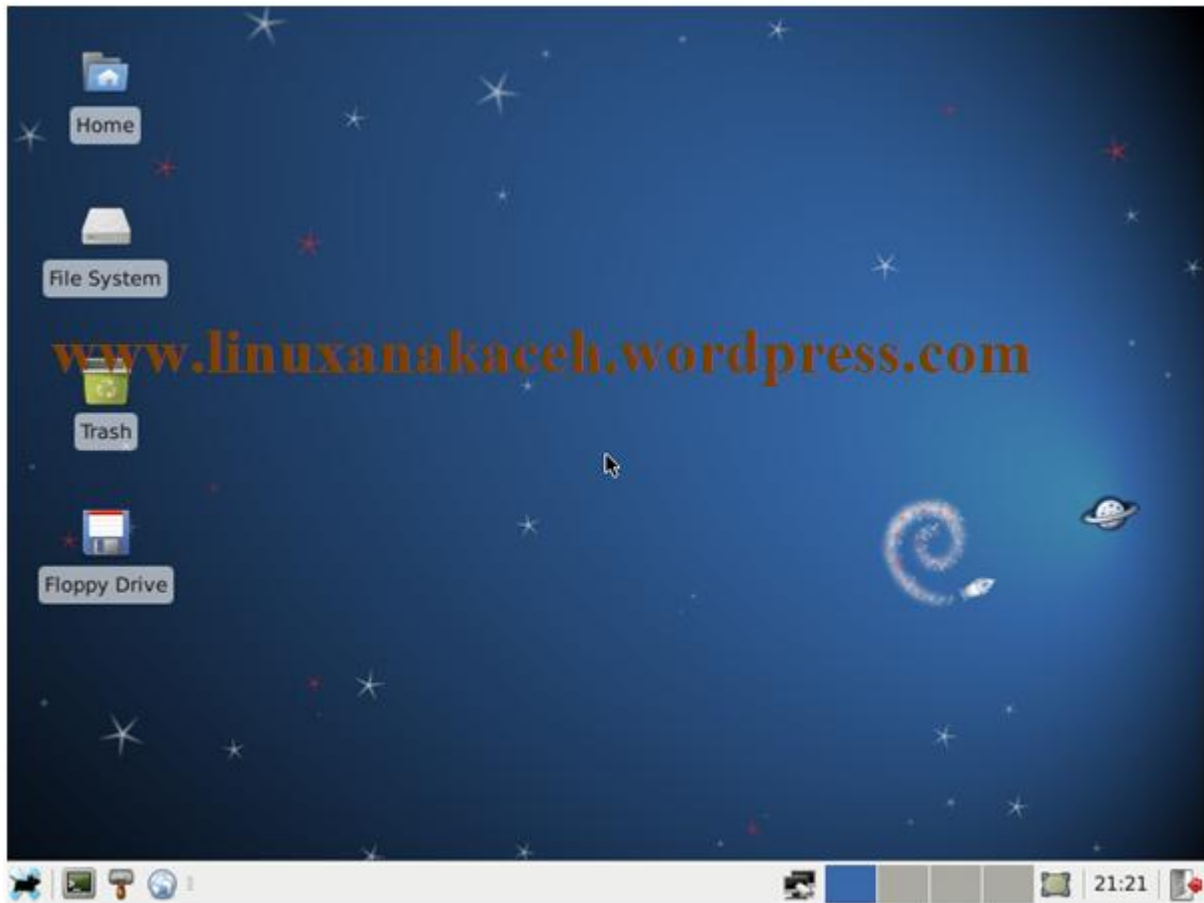
Kemudian pilih continue untuk mengakhiri instalasi



Menu GRUB







Selamat Mencoba